



USER MANUAL

www.azzatek.com

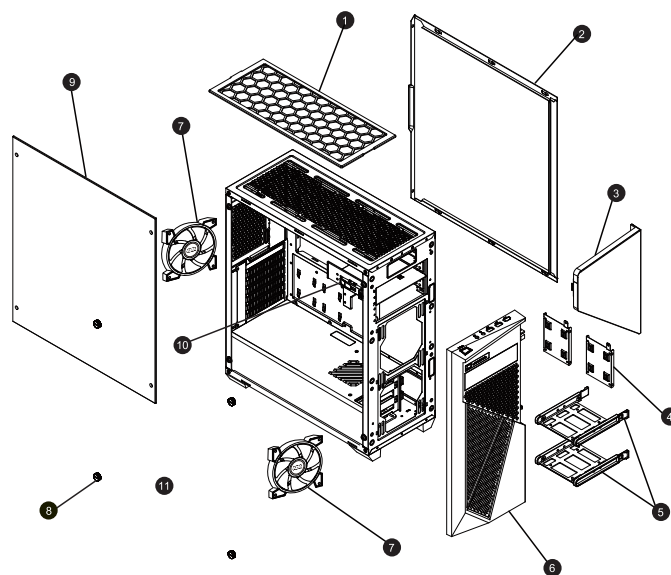
Installation Instructions

1. Specifications
2. Chassis Parts
3. Control Panel Functions
4. 3.5"/2.5" HDD Installation
5. Cooling System Installation
6. AZZA Hurricane II Digital RGB Fan Installation For Motherboard / Digital RF Remote

Specifications

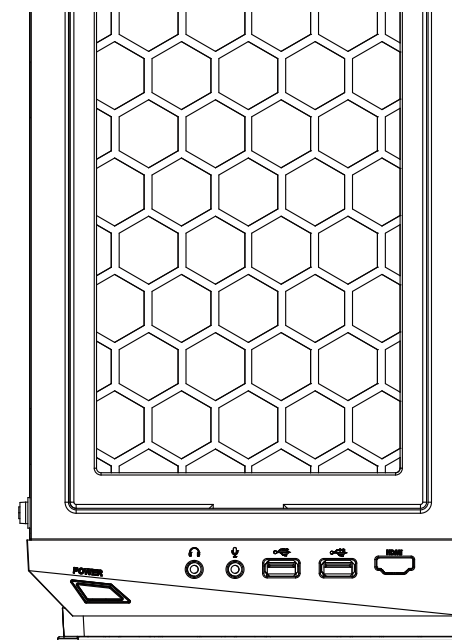
Model	
Model Name	Inferno
Model Number	CSAZ-310DH
Specifications	
Type:	ATX Mid-Tower
Color:	Black (exterior)/Black (interior)
Side Panel Window:	Tempered Glass with Rubber Mounts
Max CPU Cooler Height	Up to 155mm
With Power Supply:	No
Motherboard Compatibility:	ATX, Micro ATX
Expansion	
External 5.25" Drive Bays:	1
Internal 2.5" Drive Bays:	Up to 6 (2 with metal tray)
Internal 3.5" Drive Bays:	Up to 2
Expansion slots:	7
Front Ports	2xUSB 3.0, HD Audio
Cooling System	
Fans Installed	Front 1x120mm AZZA HURRICANE II Digital RGB fan, Rear 1x120mm AZZA HURRICANE II Digital RGB fan
Physical Specs	
Dimensions(HxWxD)	480X205X475mm / 18.9X8.1X18.7 inches
Weight	6.7 kg / 14.8 lb
Features	
Digital RGB Light Effects	Digital RGB Light on Front, 2x120mm Digital RGB fans All Digital RGB light devices controlled by Digital RGB RF Remote
Max video Card Length	Supports up to 380mm long video cards
Tempered Glass Side Window	High-quality tempered glass with rubber mounted side window allows for clear visuals to inner components.
Available Fan Ports	3x120mm or 2x140mm ports on the Top 2x120mm or 2x140mm ports in the front (1x120mm AZZA Hurricane II Digital RGB Fan included) 1x120mm Fan port in the rear (1x120mm AZZA Hurricane II Digital RGB Fan included)
Water Cooling	Supports radiators up to 360mm on top/280mm in front
Isolated Chamber	Power supply is housed inside its own isolated chamber, preventing its heat from affecting other components.
Easy installation Cooler	A pre-cut hole for easy installation of CPU cooler, eliminating the need to remove the motherboard

Chassis Parts



1	Dust filter
2	Right side panel
3	Door
4	SSD brackets
5	HDD/SSD tray
6	Front bezel
7	HURRICANE II Digital RGB fans x2
8	Hand screw
9	Left side panel
10	ODD bay

Control panel functions



	Power		Mic
	USB3.0(Blue)		Audio
	USB3.0(Blue)		(Optional)

